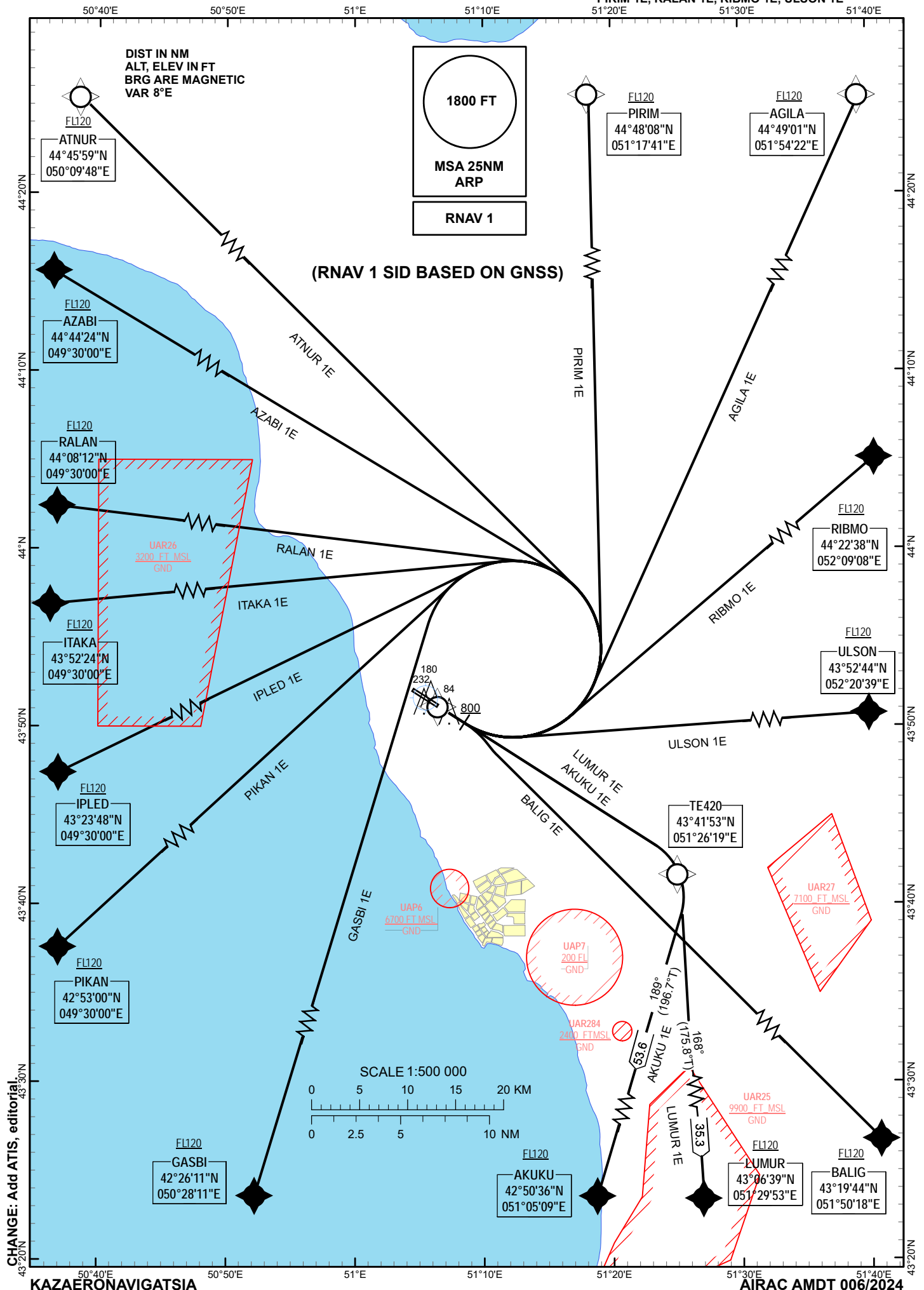


RNAV
STANDARD DEPARTURE CHART -
INSTRUMENT (SID) - ICAO

TRANSITION ALTITUDE
10000 FT

AKTAU TOWER 120.7
AKTAU ATIS (EN) 130.1
AKTAU ATIS (RU) 126.2

AGILA 1E, AKUKU 1E, ATNUR 1E, AKTAU
AZABI 1E, BALIG 1E, GASBI 1E, IPLED 1E, RWY 11
ITAKA 1E, LUMUR 1E, PIKAN 1E,
PIRIM 1E, RALAN 1E, RIBMO 1E, ULSON 1E



STANDARD DEPARTURE ROUTES – RNAV 1 (SID) AKTAU RWY 11	
PIRIM 1E Climb on RWY track to 800FT. Turn LEFT direct to PIRIM. Cross PIRIM at or above FL120 or as instructed by ATC.	GASBI 1E Climb on RWY track to 800FT. Turn LEFT direct to GASBI. Cross GASBI at or above FL120 or as instructed by ATC.
AGILA 1E Climb on RWY track to 800FT. Turn LEFT direct to AGILA. Cross AGILA at or above FL120 or as instructed by ATC.	PIKAN 1E Climb on RWY track to 800FT. Turn LEFT direct to PIKAN. Cross PIKAN at or above FL120 or as instructed by ATC.
RIBMO 1E Climb on RWY track to 800FT. Turn LEFT direct to RIBMO. Cross RIBMO at or above FL120 or as instructed by ATC.	IPLIED 1E Climb on RWY track to 800FT. Turn LEFT direct to IPLIED. Cross IPLIED at or above FL120 or as instructed by ATC.
ULSON 1E Climb on RWY track to 800FT. Turn LEFT direct to ULSON. Cross ULSON at or above FL120 or as instructed by ATC.	ITAKA 1E Climb on RWY track to 800FT. Turn LEFT direct to ITAKA. Cross ITAKA at or above FL120 or as instructed by ATC.
BALIG 1E Climb on RWY track to 800FT. Turn RIGHT direct to BALIG. Cross BALIG at or above FL120 or as instructed by ATC.	RALAN 1E Climb on RWY track to 800FT. Turn LEFT direct to RALAN. Cross RALAN at or above FL120 or as instructed by ATC.
LUMUR 1E Climb on track 115° to TE420. Turn RIGHT on track 168° to LUMUR. Cross LUMUR at or above FL120 or as instructed by ATC.	AZABI 1E Climb on RWY track to 800FT. Turn LEFT direct to AZABI. Cross AZABI at or above FL120 or as instructed by ATC.
AKUKU 1E Climb on track 115° to TE420. Turn RIGHT on track 189° to AKUKU. Cross AKUKU at or above FL120 or as instructed by ATC.	ATNUR 1E Climb on RWY track to 800FT. Turn LEFT direct to ATNUR. Cross ATNUR at or above FL120 or as instructed by ATC.

WAYPOINT LIST	
SID RWY 11	
Waypoint Identifier	Coordinates
AGILA	444901.0N 0515422.0E
AKUKU	425036.0N 0510509.0E
ATNUR	444559.0N 0500948.0E
AZABI	444424.0N 0493000.0E
BALIG	431944.0N 0515018.0E
DER	435105.3N 0510634.0E
GASBI	422611.0N 0502811.0E
IPLIED	432348.0N 0493000.0E
ITAKA	435224.0N 0493000.0E
LUMUR	430639.0N 0512953.0E
PIKAN	425300.0N 0493000.0E
PIRIM	444808.0N 0511741.0E
RALAN	440812.0N 0493000.0E
RIBMO	442238.0N 0520908.0E
TE420	434153.3N 0512618.6E
ULSON	435244.0N 0522039.0E

TABULAR DESCRIPTION										
RNAV 1 SID RWY 11										
Serial Number	Waypoint ID	Path Descriptor	Flyover	Course °M (°T)	Distance (NM)	Turn Direction	Altitude (ft)	Speed (kts)	VPA/TCH	Navigation Specification
PIRIM 1E										
010	-	CA	-	115 (122.6)	3.6	-	+800	-	-	RNAV1
020	PIRIM	DF	-	-	-	L	+FL120	-	-	RNAV1
AGILA 1E										
010	-	CA	-	115 (122.6)	3.6	-	+800	-	-	RNAV1
020	AGILA	DF	-	-	-	L	+FL120	-	-	RNAV1
RIBMO 1E										
010	-	CA	-	115 (122.6)	3.6	-	+800	-	-	RNAV1
020	RIBMO	DF	-	-	-	L	+FL120	-	-	RNAV1
ULSON 1E										
010	-	CA	-	115 (122.6)	3.6	-	+800	-	-	RNAV1
020	ULSON	DF	-	-	-	L	+FL120	-	-	RNAV1
BALIG 1E										
010	-	CA	-	115 (122.6)	3.6	-	+800	-	-	RNAV1
020	BALIG	DF	-	-	-	R	+FL120	-	-	RNAV1
LUMUR 1E										
010	TE420	CF	-	115 (122.6)	17	-	-	-	-	RNAV1
020	LUMUR	TF	-	168 (175.8)	35.3	R	+FL120	-	-	RNAV1
AKUKU 1E										
010	TE420	CF	-	115 (122.6)	17	-	-	-	-	RNAV1
020	AKUKU	TF	-	189 (196.7)	53.6	R	+FL120	-	-	RNAV1
GASBI 1E										
010	-	CA	-	115 (122.6)	3.6	-	+800	-	-	RNAV1
020	GASBI	DF	-	-	-	L	+FL120	-	-	RNAV1
PIKAN 1E										
010	-	CA	-	115 (122.6)	3.6	-	+800	-	-	RNAV1
020	PIKAN	DF	-	-	-	L	+FL120	-	-	RNAV1
IPLIED 1E										
010	-	CA	-	115 (122.6)	3.6	-	+800	-	-	RNAV1
020	IPLIED	DF	-	-	-	L	+FL120	-	-	RNAV1
ITAKA 1E										
010	-	CA	-	115 (122.6)	3.6	-	+800	-	-	RNAV1
020	ITAKA	DF	-	-	-	L	+FL120	-	-	RNAV1
RALAN 1E										
010	-	CA	-	115 (122.6)	3.6	-	+800	-	-	RNAV1
020	RALAN	DF	-	-	-	L	+FL120	-	-	RNAV1
AZABI 1E										
010	-	CA	-	115 (122.6)	3.6	-	+800	-	-	RNAV1
020	AZABI	DF	-	-	-	L	+FL120	-	-	RNAV1
ATNUR 1E										
010	-	CA	-	115 (122.6)	3.6	-	+800	-	-	RNAV1
020	ATNUR	DF	-	-	-	L	+FL120	-	-	RNAV1